

# Investing made easy!

**SAdisplayhomes**  
**for sale.com.au**

**9%**  
RENTAL  
RETURN

**Hickinbotham**

 Lot 21 (272) Marion Road, Netley

**\$1,100,000\***

RENTAL RETURN PER ANNUM **\$99,000\***

## Set & forget!

Location, location, location! There's plenty of wow factor in this quality 4 bedroom display home, located only a 10 minute drive to the city and 10 minutes to the beach! An entertainer's dream, the fantastic designer kitchen features a huge walk-in pantry, and overlooks a spacious meals and living room that opens onto a large undercover alfresco with inbuilt barbecue and separate home theatre, plus a kids rumpus room upstairs. The master suite has a luxury ensuite and walk-in robe. And there's plenty of storage in designer inbuilt joinery!

Other display homes available, visit  
[sadisplayhomesforsale.com.au](http://sadisplayhomesforsale.com.au) for more details.



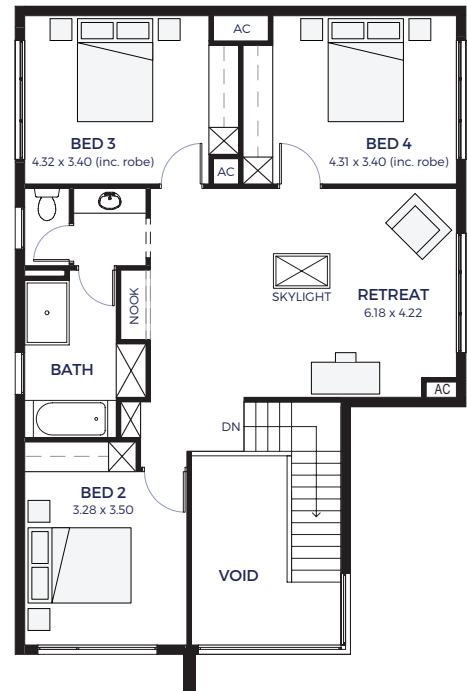
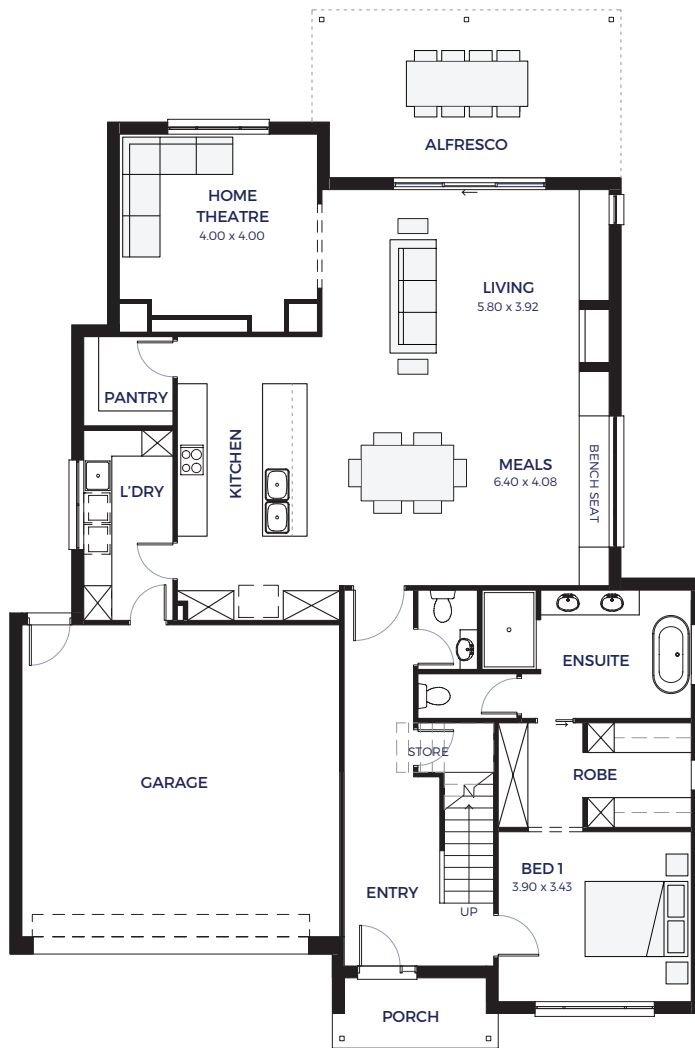
- Rental Return \$99,000 PA\*
- Lease is for 2 years with 3 x 1 year option\*
- Zero maintenance, furniture included\*
- Landscaped front and rear gardens
- Air-conditioning and alarm system included
- Total land area of 836 sqm
- Blue chip investment opportunity

\*Conditions apply. All information correct at time of printing. Date of issue 2.11.20. All information correct at time of printing. There may be slight differences between the floorplan shown and the actual home. RLA230 557. Building Lic. No. G8969



Lot 21 (272) Marion Road, Netley

ONLY \$1,100,000\*



### ALSACE ALFRESCO

Living Area: 268.40 sqm

Porch: 4.27 sqm

Garage: 44.62 sqm

Alfresco: 20.15 sqm

Total: 337.44 sqm

Width: 14 m

Depth: 20.97 m

Note: there may be slight differences between the floorplan shown and the actual home.

**Hickinbotham**

**SA**displayhomes  
forsale.com.au

STATESMAN  
HOMES

**Hickinbotham**

**SA** HOUSING  
CENTRE

Partnering with SA's leading builders