

# Investing made easy!

**SAdisplayhomes**  
**for sale.com.au**

**9%**  
RENTAL  
RETURN

**Hickinbotham**

 Lot 939 Waterford Circuit, Lightsview (Lightsview)

**\$915,000\*** RENTAL RETURN PER ANNUM **\$82,350\***



## Set & forget!

Overlooking the water at Lightsview, this luxury four bedroom display home is just 9 Kilometres from the city. And it's a home that's all about the water view!

The jaw dropping master suite is a lot more than a room with a view! The spacious master bedroom opens onto a large balcony and has a walk-in-robe that is more like a dressing room and an ensuite that is pure luxury. The upstairs retreat opens onto the balcony and overlooks the water. Downstairs the gourmet kitchen, meals area and family room, which even includes a fireplace, are all designed around the water views and flow out onto an undercover alfresco. The designer home theatre at the front of the home has a stone-style wall inside that gives a stylish edge. And there's plenty of storage, so it's a home built for family living.

Other display homes available, visit  
[sadisplayhomesforsale.com.au](https://sadisplayhomesforsale.com.au) for more details.

\*Conditions apply. All information correct at time of printing. Date of issue 24.7.19. All information correct at time of printing. There may be slight differences between the floorplan shown and the actual home. RLA230 557. Building Lic. No. G8969

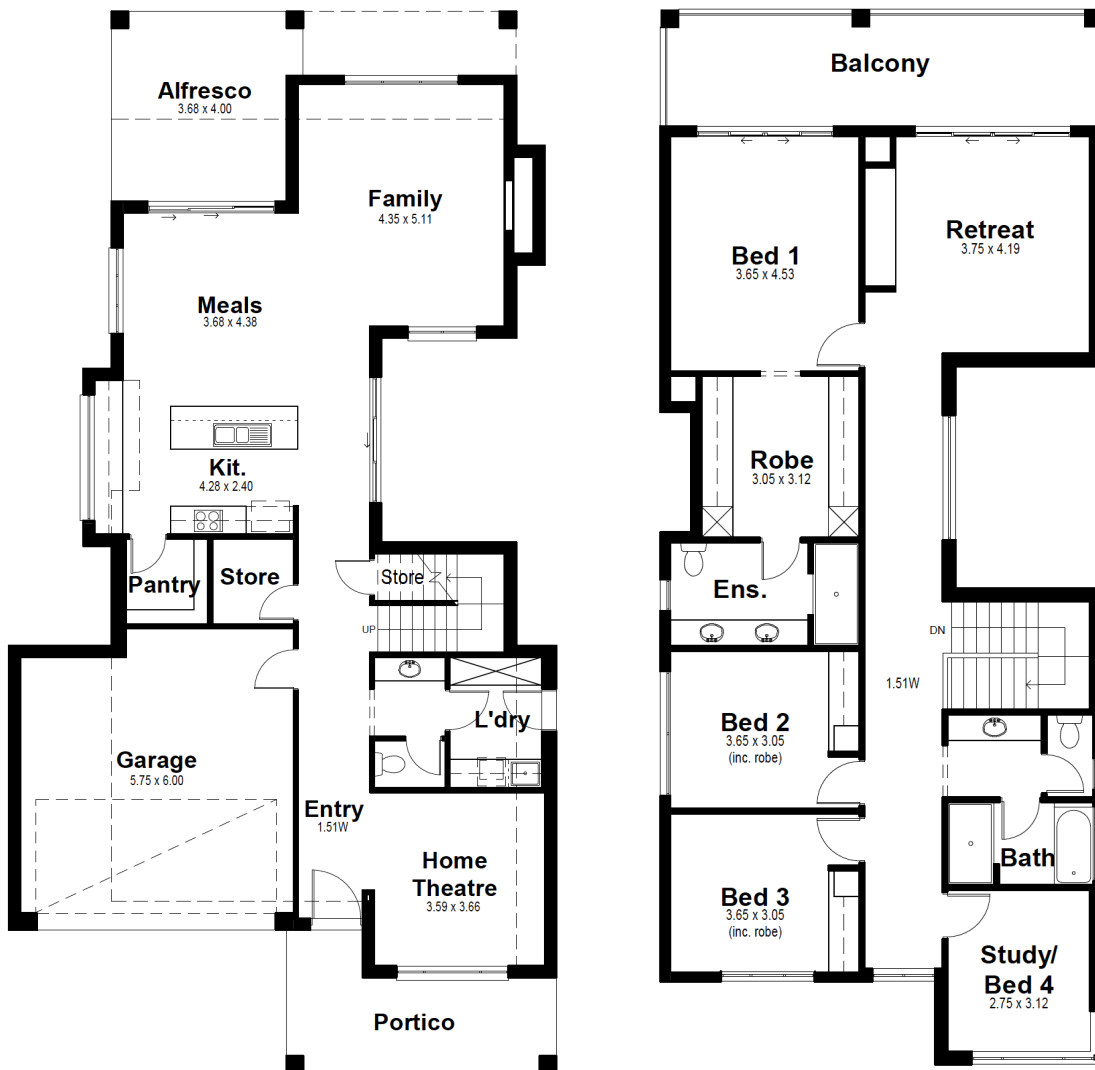


- Rental Return \$82,350 PA\*
- Lease is for 1 year with 3 x 1 year option\*
- Zero maintenance, furniture included\*
- Landscaped front and rear gardens
- Air-conditioning and alarm system included
- Total land area of 343.75 sqm
- Blue chip investment opportunity



Lot 939 Waterford Circuit, Lightsview (Lightsview)

ONLY \$915,000\*



### Vancouver Alfresco Modified

Ground Floor Living Area: 119.74 sqm

First Floor Living Area: 132.30 sqm

Portico: 12.94 sqm

Alfresco: 15.19 sqm

Balcony: 19.26 sqm

Garage: 37.26 sqm

Total: 336.69 sqm

Width: 11.51 m

Depth: 23.35 m

**Hickinbotham**

**SA**displayhomes  
forsale.com.au

STATESMAN  
HOMES

**Hickinbotham**

**SA**HOUSING  
CENTRE

Partnering with SA's leading builders