

Investing made easy!

SA display homes
forsale.com.au

9%
RENTAL
RETURN

SA HOUSING
CENTRE

📍 Lot 10 Saverio Boulevard, Angle Vale (Miravale)

\$414,950* RENTAL RETURN PER ANNUM **\$37,345***

Set & forget!

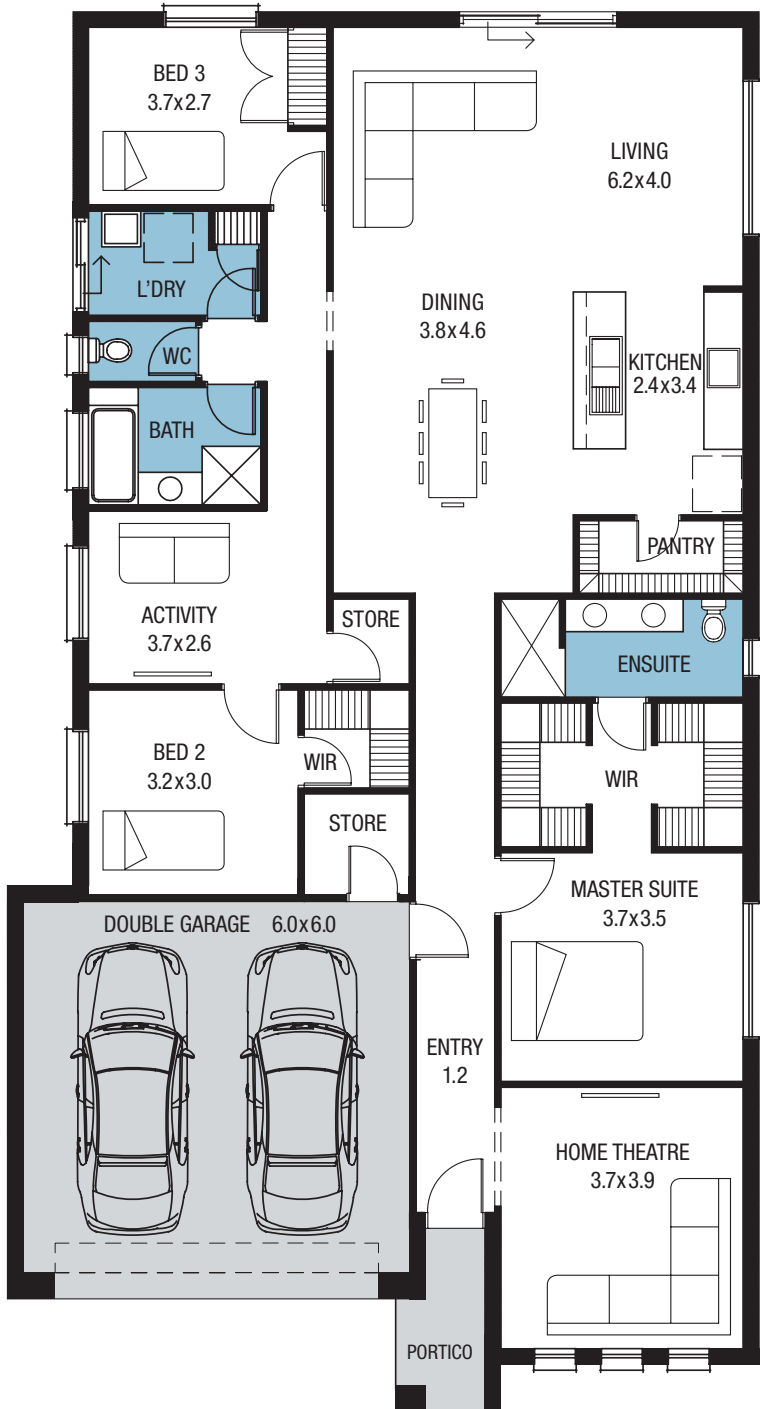
This outstanding 3 bedroom design is the ideal family home at a price that is surprisingly affordable. Complete with a luxury master suite, a separate home theatre, gourmet kitchen and walk-in pantry, a store off the garage, a separate activity room for the kids and a fantastic casual living area ideal for entertaining.



- 📍 Rental Return \$37,345 PA*
- 📍 Zero maintenance, furniture included*
- 📍 Landscaped and irrigated front and rear gardens
- 📍 Air-conditioning and alarm system included
- 📍 Lease is for 2 years plus 3 x 1 year options*
- 📍 Total land area of 582 sqm
- 📍 Blue chip investment opportunity

Other display homes available, visit
sadisplayhomesforsale.com.au for more details.

*Conditions apply. All information correct at time of printing. Date of issue 20.5.20. There may be slight differences between the floorplan shown and the actual home. RLA230 557. Building Lic. No. G8969



MEMPHIS MK2

Living Area: 175.88 sqm

Portico: 3.06 sqm

Garage/Store: 41.10 sqm

Total: 220.05 sqm

Width: 11.51 m (inc double garage)

Depth: 21.23 m

Note: there may be slight differences between the floorplan shown and the actual home.

