

Premium Blue chip Investment

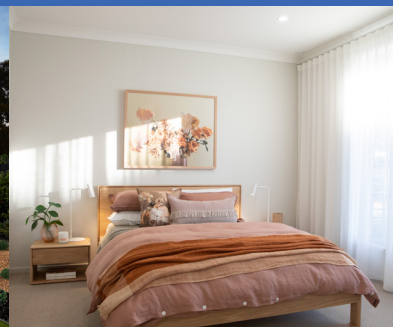
**SAdisplayhomes
forsale.com.au**

9%
RENTAL
RETURN

**STATESMAN
HOMES**

📍 Lot 14 Fradd Road, Angle Vale (Burgundy)

\$514,950* RENTAL RETURN PER ANNUM **\$46,345***



Set & forget!

This outstanding flagship design is an investor's dream! Nestled amongst the vineyards and orchards of Angle Vale, and opposite the Angle Vale Community Sports Centre, the spacious 4 bedroom home features a luxurious master bedroom suite with "his and hers" robes and huge ensuite, a separate dining/living area, a study, a gourmet kitchen and a fantastic casual living area. And there's even an alfresco!

Other display homes available, visit
sadisplayhomesforsale.com.au for more details.



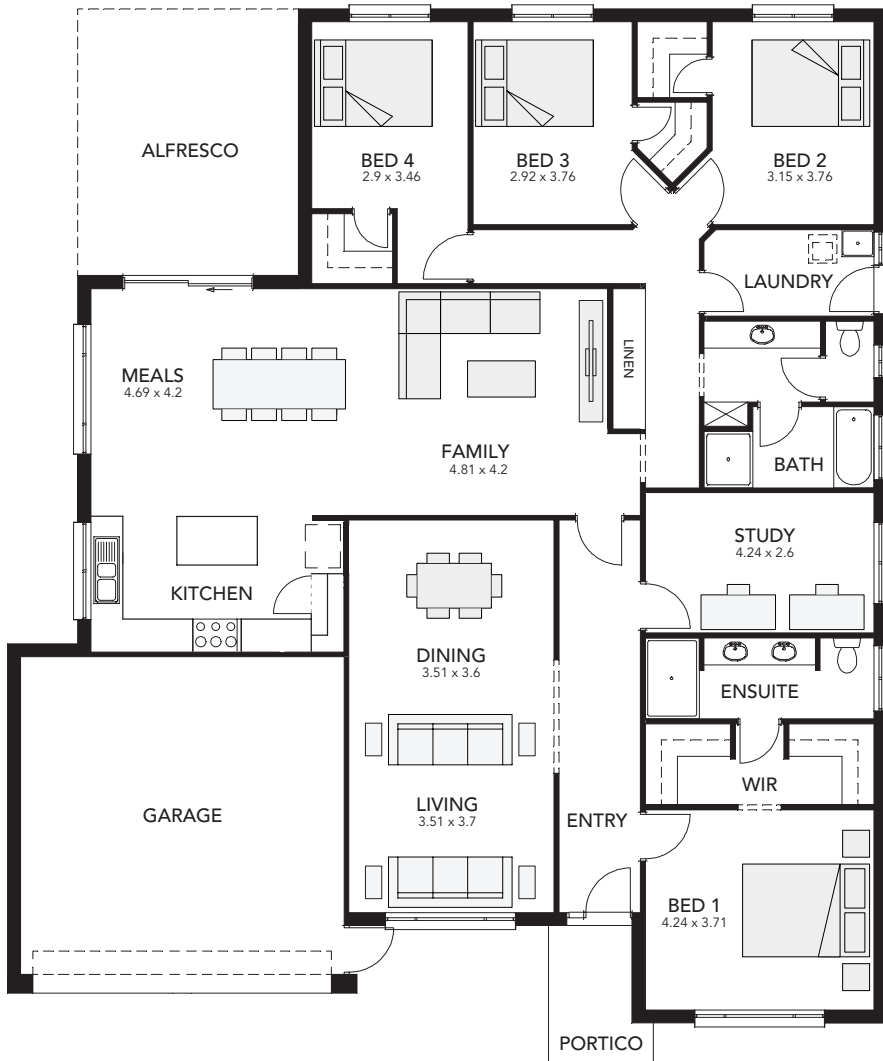
- 📍 Rental Return \$46,345*
- 📍 Lease is for 2 years with 3 x 1 year option*
- 📍 Zero maintenance, furniture included*
- 📍 Landscaped front and rear gardens
- 📍 Air-conditioning and alarm system included
- 📍 Total land area of 630 sqm
- 📍 Blue chip investment opportunity

*Conditions apply. All information correct at time of printing. Date of issue 14.8.20. All information correct at time of printing. There may be slight differences between the floorplan shown and the actual home. RLA230 557. Building Lic. No. G8969



Lot 14 Fradd Road, Angle Vale (Burgundy)

\$514,950*



ADELAIDE ALFRESCO MK2

Living Area: 214.73 sqm

Portico: 5.41 sqm

Garage: 39.48 sqm

Alfresco: 18.77 sqm

Total: 278.39 sqm

Width: 16.00 m (inc. double garage)

Depth: 20.03 m

Note: there may be slight differences between the floorplan shown and the actual home.

**STATESMAN
HOMES**