

# Premium Blue chip Investment

SAdisplayhomes  
forsale.com.au

9%  
RENTAL  
RETURN

STATESMAN  
HOMES

📍 Lot 150 Goodenia Grove, Mount Barker (Clover Park)

\$599,950\*

RENTAL RETURN  
PER ANNUM

\$53,995\*



## Set & forget!

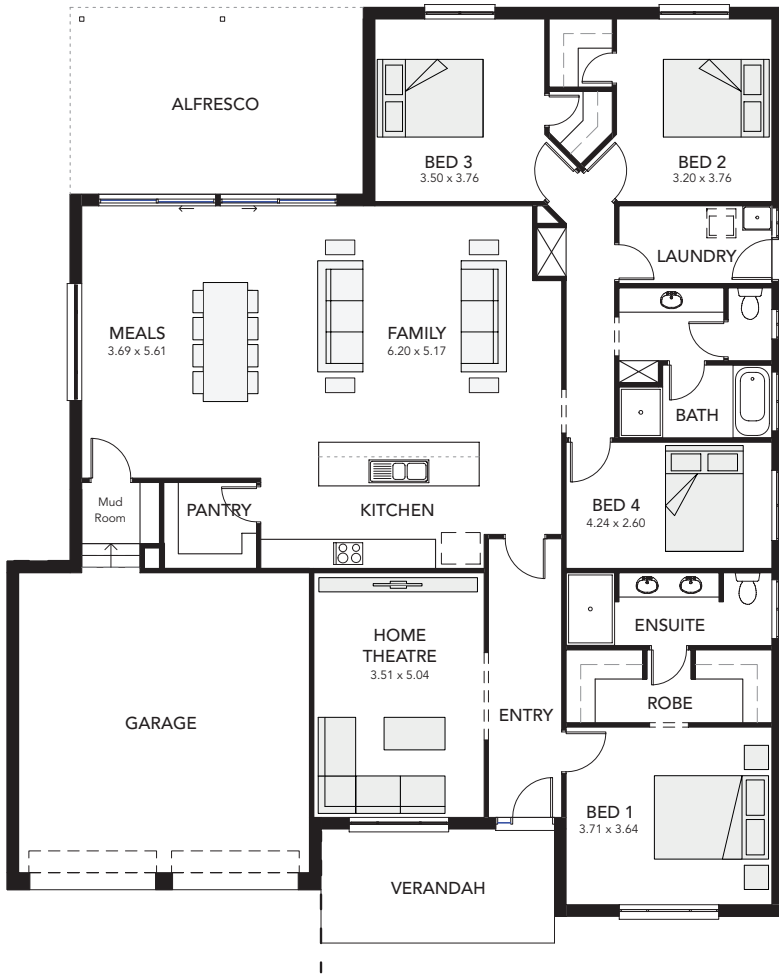
This outstanding flagship design is an investor's dream! Ideally located close to schools, shops and parks, this quality home features a luxurious master bedroom suite with "his and hers" robes and a hotel-style ensuite, a huge home theatre and a gourmet kitchen, with a large walk-in pantry, and a fantastic casual living area.

Other display homes available, visit  
[sadisplayhomesforsale.com.au](https://sadisplayhomesforsale.com.au) for more details.



- 📍 Rental Return \$53,995\*
- 📍 Lease is for 2 years with 3 x 1 year option\*
- 📍 Zero maintenance, furniture included\*
- 📍 Landscaped front and rear gardens
- 📍 Air-conditioning and alarm system included
- 📍 Total land area of 627 sqm
- 📍 Blue chip investment opportunity

\*Conditions apply. All information correct at time of printing. Date of issue 27.3.20. All information correct at time of printing. There may be slight differences between the floorplan shown and the actual home. RLA230 557. Building Lic. No. G8969



**VIRGINIA ALFRESCO  
SPLIT MOD**

Living Area: 212.59 sqm  
 Verandah: 6.00 sqm  
 Garage: 40.98 sqm  
 Alfresco: 23.25 sqm  
 Total: 282.82 sqm  
 Width: 16.00 m (inc. double garage)  
 Depth: 19.02 m

Note: there may be slight differences between the floorplan shown and the actual home.

