

Premium Blue chip Investment

SAdisplayhomes
forsale.com.au

9%
RENTAL
RETURN



STATESMAN
HOMES

📍 Lot 5 Saverio Boulevard, Angle Vale (Miravale)

\$504,950* RENTAL RETURN PER ANNUM **\$45,445***



Set & forget!

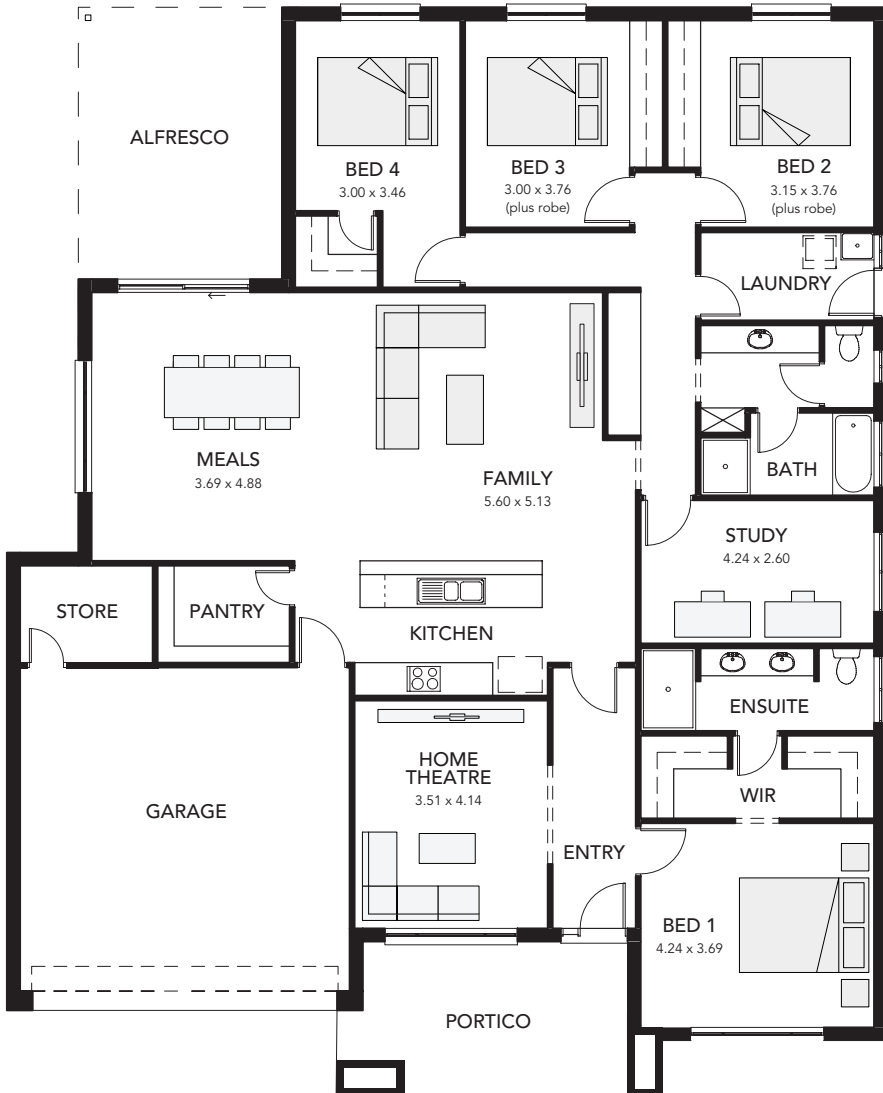
This outstanding flagship design is an investor's dream! Nestled amongst the vineyards and orchards of Angle Vale, the spacious 4 bedroom home features a luxurious master bedroom suite with "his and hers" robes and huge ensuite, a home theatre, a study, a gourmet kitchen and a fantastic casual living area. And there's even an alfresco!



- 📍 Rental Return \$45,445*
- 📍 Lease is for 2 years with 3 x 1 year option*
- 📍 Zero maintenance, furniture included*
- 📍 Landscaped front and rear gardens
- 📍 Air-conditioning and alarm system included
- 📍 Total land area of 576 sqm
- 📍 Blue chip investment opportunity

Other display homes available, visit
sadisplayhomesforsale.com.au for more details.

*Conditions apply. All information correct at time of printing. Date of issue 16.5.20. All information correct at time of printing. There may be slight differences between the floorplan shown and the actual home. RLA230 557. Building Lic. No. G8969



GLENGOWRIE ALFRESCO

Living Area: 212.72 sqm
 Portico: 14.43 sqm
 Garage/Store: 44.39 sqm
 Alfresco: 18.28 sqm
 Total: 289.82 sqm
 Width: 16.00 m (inc. double garage)
 Depth: 19.72 m

Note: there may be slight differences between the floorplan shown and the actual home.

