

Investing made easy!

SAdisplayhomes
forsale.com.au

PRE-RELEASE - UNDER CONSTRUCTION

9%
RENTAL
RETURN

STATESMAN
HOMES

📍 Lot 120 Tapleys Hill Road, Fulham Gardens

\$1,300,000* RENTAL RETURN PER ANNUM \$117,000*

Urban oasis!

Presenting an exclusive buying opportunity in the coveted suburb of Fulham Gardens.

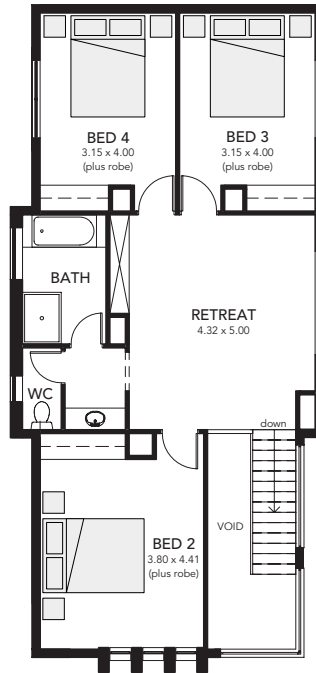
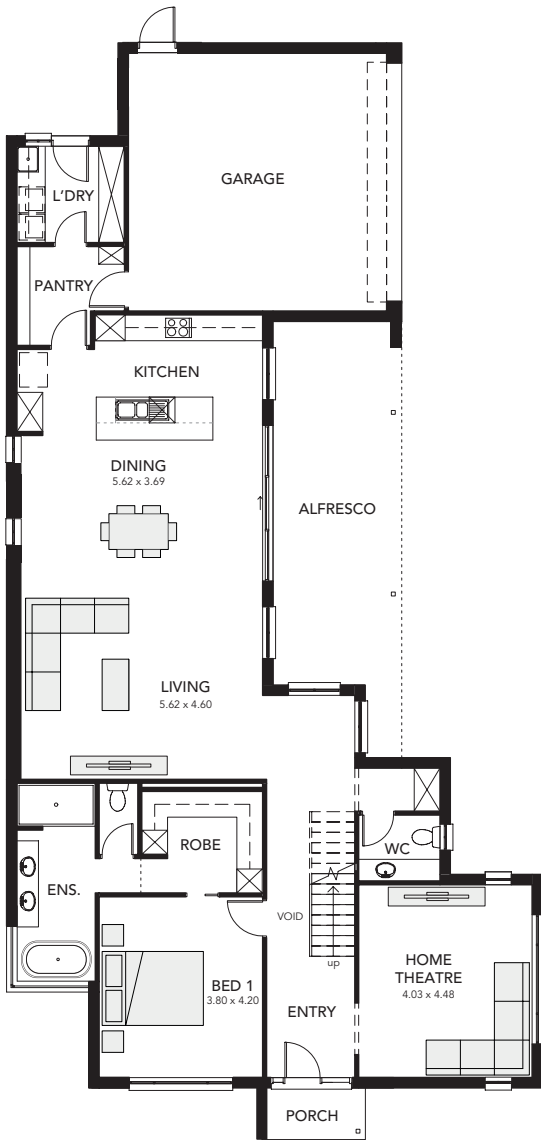
This stunning home has been intelligently designed to perfectly balance luxury with liveability. Four bedrooms including a luxury master suite, fabulous indoor and outdoor entertaining areas, a gourmet kitchen, separate home theatre, a large retreat and generous secondary bedrooms – this design is a true urban oasis!

Other display homes available, visit sdisplayhomesforsale.com.au for more details.



- Rental Return \$117,000*
- Lease is for 2 years with 3 x 1 year options*
- Under construction - settlement at display home opening
- Zero maintenance, furniture included*
- Landscaped front and rear gardens
- Air-conditioning and alarm system included
- Total land area of 428 sqm
- Blue chip investment opportunity

*Conditions apply. Floorplan and images are for illustration purposes only. Please refer to the working drawings you receive upon signing a contract for precise measurements. To the extent that there is any conflict between the material contained in this brochure and the contract of sale, the purchaser acknowledges that the terms of the contract of sale will at all times prevail. All information correct at time of printing. There may be slight differences between the floorplan shown and the actual home. RLA 230557. Building Lic. No. G8969. Date of issue 7.12.2021. © 2021 Statesman Homes. E&OE December 2021.



HEATHPOOL ALFRESCO

Living Area: 257.75 sqm
 Porch: 3.11 sqm
 Garage: 39.52 sqm
 Alfresco: 27.42 sqm
 Total: 327.80 sqm
 Width: 12.45 m
 Depth: 25.43 m

Note: there may be slight differences between the floorplan and elevations shown and the actual home.

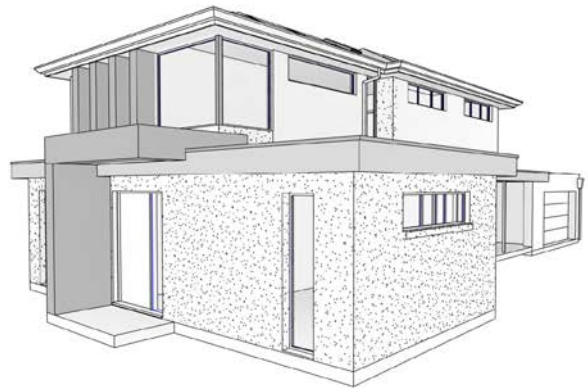
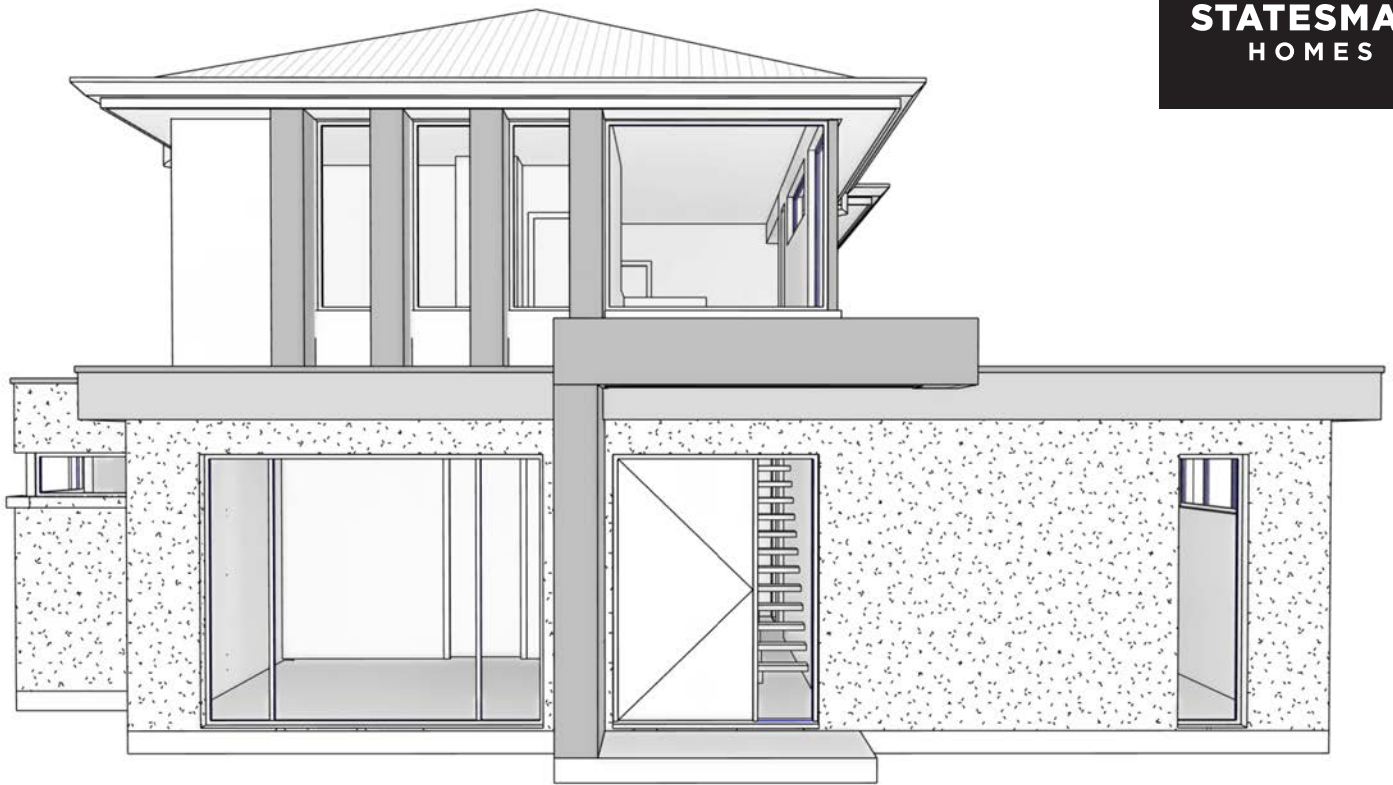




Lot 120 Tapleys Hill Road, Fulham Gardens

\$1,300,000*

**STATESMAN
HOMES**



Note: there may be slight differences between the floorplan and elevations shown and the actual home.

SAdisplayhomes
forsale.com.au

**STATESMAN
HOMES**

Hickinbotham

SA HOUSING
CENTRE

Partnering with SA's leading builders